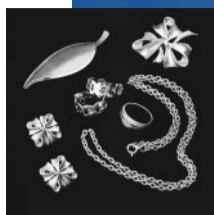


November  
Dressed up for the  
upcoming holidays,  
shoppers show their...

# • thanks by giving

costume jewelry made  
from Belmont casting alloys



Pure metals and alloys.  
Standard and custom shapes.



**Belmont**  
M E T A L S I N C .

## Belmont casts your holiday needs for jewelry and decorative products.

It's that time of year when holiday shoppers begin to think about getting those special somethings for family members. That bracelet or brooch they're holding in their hands was quite possibly fashioned by a Belmont casting alloy. If you're a caster of costume jewelry or sculptures, you know Belmont can always be relied upon to provide uniform, high quality casting alloys that are priced right.

Jewelry Casting

**C**asting costume jewelry requires a skilled hand and an artistic eye. Equally vital is a flexible and reliable casting alloy to ensure consistent form and precise detail. Belmont's longstanding experience and knowledge provides the flexibility to fine-tune the alloying processes to meet your specific casting requirements.



Copper-base alloys are frequently used instead of Gold to produce jewelry that is similar in color; Copper is a preferred substitute for Gold because it is highly resistant to corrosion and is an excellent base for plating. Belmont's custom White Bronze offers a low casting temperature and distinctive color. Another of our proprietary alloys, Jeweler's Manganese Bronze, is easily cast in a refractory mold.

A special Belmont alloy that's being widely used in jewelry casting is Everdur Silicon Bronze. Originally developed for casting sculpture, Everdur's ease of casting, finishing, and plating has made it a favorite of casters around the world.

## Feature Metal

Jewelry casters all hail Britannia, the original Lead-free Pewter. This alloy offers a pleasing combination of strength, whiteness, and tarnish-resistance.

Less expensive custom jewelry is often cast into rubber molds using Bismuth-, Lead-, Tin-, or Zinc-base alloys. These attractive pieces are normally finished by plating, enameling, or painting. Belmont's recently published data sheet, "Casting Alloys for Rubber Molds," provides more specific information about each of these alloys.

### All That Glitters Is Not Gold Trivia Question

That 14K Gold pendant you've just bought probably contains some very pure metals from Belmont—used by casters either as a direct metal addition or in alloy form. By percentage of weight, how much gold is there in 14 karats? Bonus question: What other elements are typically in 14K Gold?

Answer: 14 karat is comprised of 58.33% Gold. Other elements may include Cadmium, Copper, Nickel, Silver, and Zinc.

## Belmont offers a cast of thousands...

Belmont Metals offers the expertise and versatility to fit any casting need, with standard and customized Aluminum-, Bismuth-, Copper-, Lead-, Tin- and Zinc-base formulations and shapes. You can always count on getting the detail, strength, color, and corrosion resistance you're looking for from Belmont. And we're more than simply a source for metals and alloys—our experienced Sales Engineering staff will impress you with their extensive knowledge and friendly service.

